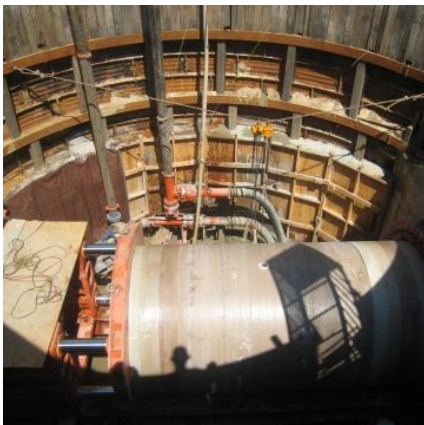


Lower Catoma Interceptor Replacement Montgomery, AL



PROJECT OVERVIEW AND CHALLENGES

Bradshaw Construction Corporation completed four soft ground tunnels under state roads and a CSX railroad by microtunneling as part of a 37,000 linear foot long sewer pipeline project. The tunnels ranged in diameter from 83 to 96 inches and 110 to 220 linear feet in length. The smaller tunnels were direct jack 78-inch Hobas pipe, and the larger railroad tunnels were 2-pass Permalok steel casing and 78-inch Hobas carrier pipe. The microtunneling equipment performed admirably through the wet, fine sand below the water table.



PROJECT INFORMATION - 464

OWNER:

City of Montgomery
Water Works and Sanitary Sewer
Board
Henrique Rizzo
334.206.1600

ENGINEER:

CH2M Hill
4121 Carmichael Road #400
Montgomery, AL 36106
David Stejskal, 334.271.1444

CONTRACTOR:

SJ Louis Construction, Inc.

COMPLETION DATE:

10/13/2008

GEOLOGY:

Fine Sand

EXCAVATION METHOD:

RASA MTBM 83" & 96" Ø

MINING DIMENSIONS:

415' x 83" Ø & 236' x 96" Ø

FINAL LINING:

78" FRP

FOR MORE INFORMATION:

Eric Eisold, Vice President
410.970.8300
eeisold@bradshawcc.com
Refer to Project 464