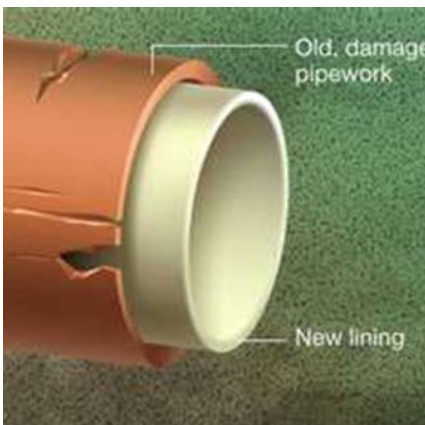


## Claymont Avenue Sewer Repair Baltimore, MD



### PROJECT OVERVIEW AND CHALLENGES

Bradshaw Construction was contracted by Baltimore city to perform an emergency repair and rehabilitation of a collapsed brick sewer causing sewage back-up and flooding in a residential area. Bradshaw excavated down and removed the damaged portion along with the top of the sewer. Then, 30" PVC slip-lining pipe was inserted into the sewer and pushed along the existing pipeline. When the entire length of slip-line pipe was installed the space between the new PVC pipe and the old deteriorated brick sewer was pumped full of grout so as to fill any voids. The major challenge of this project was that all the work needed to be completed without further restriction of the active sanitary sewer.



### PROJECT INFORMATION - 454

#### OWNER:

Baltimore City  
Department of Public Works  
Tom Pompa  
(410) 396-3671

#### ENGINEER:

Baltimore City  
(410) 396-3671

#### CONTRACTOR:

Monumental Paving & Excavating

#### COMPLETION DATE:

11/28/2006

#### GEOLOGY:

Clay

#### EXCAVATION METHOD:

Mini Excavator  
Clay Diggers

#### MINING DIMENSIONS:

168' x 30" Ø

#### FINAL LINING:

30" PVC Liner Pipe

#### FOR MORE INFORMATION:

Mike Wanhatalo, Project  
Engineer/Estimator  
(410) 970-8300  
mwanhatalo@bradshawcc.com  
Refer to Project 454